

AB1 PNEUMATIC BALL VIBRATOR

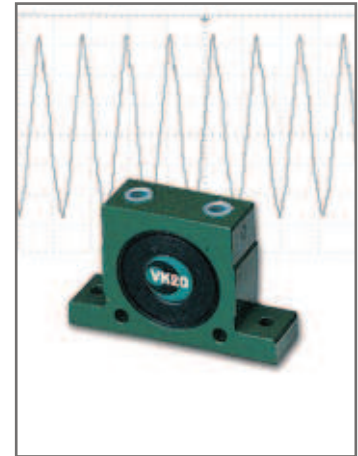
FEATURES

1. Special aluminum alloy, small size, light weight.
2. Fine enclosure protection can be applied in high humidity or dusty working area.
3. Frequency and amplitude of vibration can be adjusted as required.
4. Low price and durable.

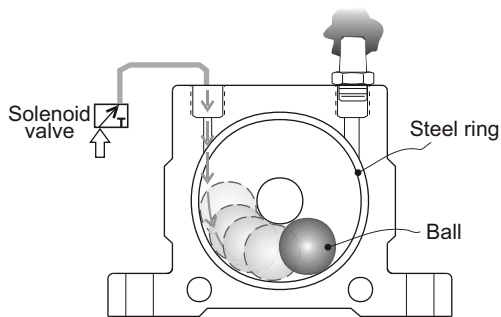
The best choice for bridge-break in thin wall, small tank. This model can be used in vibrating separator, vibrating conveyor, automatic component arrangement, electroplating built-up, protection material packing process, process molding.

WORKING PRINCIPLE

Pneumatic Ball vibrator is equipped with steel ring and ball inside. It is tightly sealed by plastic side covers. Vibration takes place when internal ball is pushed by compressed air and centrifugal force is produced by ball rotary motion.

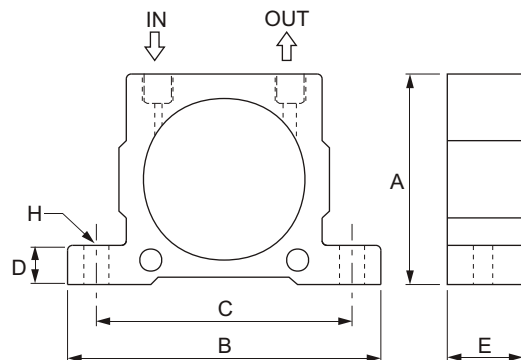


Temperature: -40~100°C
Noise level range: 80-115 dBA



Unit= mm

(Model No.) Order No.	A	B	C	D	E	H	IN	OUT
(VK-10) AB1010	51	86	68	12	20	∅7	1/4"PT	1/4"PT
(VK-13) AB1013	67	113	90	16	24	∅9	1/4"PT	1/4"PT
(VK-16) AB1016					27			
(VK-20) AB1020	83	128	104	16	33	∅9	1/4"PT	1/4"PT
(VK-25) AB1025					38			
(VK-32) AB1032	103	160	130	20	44	∅11	3/8"PT	3/8"PT



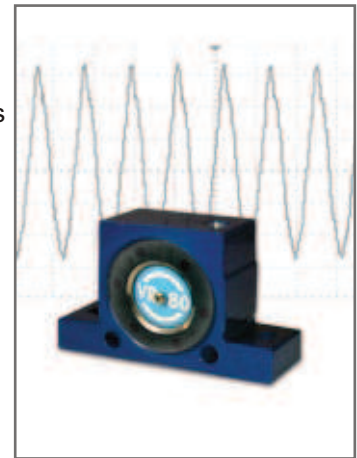
(Model No.) Order No.	FREQUENCY (V.P.M.)			FORCE (N)			AIR CONSUMPTION (ℓ / min)			WEIGHT (g)
	2Bar 29PSI	4Bar 58PSI	6Bar 87PSI	2Bar 29PSI	4Bar 58PSI	6Bar 87PSI	2Bar 29PSI	4Bar 58PSI	6Bar 87PSI	
(VK-10) AB1010	22,500	28,000	34,000	250	470	710	92	150	200	140
(VK-13) AB1013	15,000	18,500	22,500	320	550	870	94	158	225	260
(VK-16) AB1016	13,000	17,000	19,500	450	800	1,100	122	200	280	300
(VK-20) AB1020	10,500	14,500	16,500	720	1,220	1,720	130	230	340	530
(VK-25) AB1025	9,200	12,200	14,000	930	1,570	2,050	160	290	425	630
(VK-32) AB1032	7,800	9,700	12,500	1,510	2,470	3,210	215	375	570	1150

AB2 PNEUMATIC ROLLER VIBRATOR

FEATURES

1. Special aluminum body, small size, light weight
2. Frequency and amplitude of vibration can be adjusted as required
3. The strongest vibration force drove by roller among other same size products

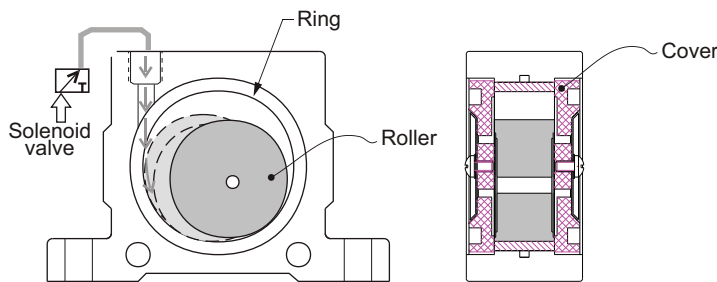
Its high vibration frequency can prevent material jam in pipe delivery, it can also be applied in bridge-break, concrete injection operation process.



Temperature: -40~100°C
Noise level range: 75-100 dBA

WORKING PRINCIPLE

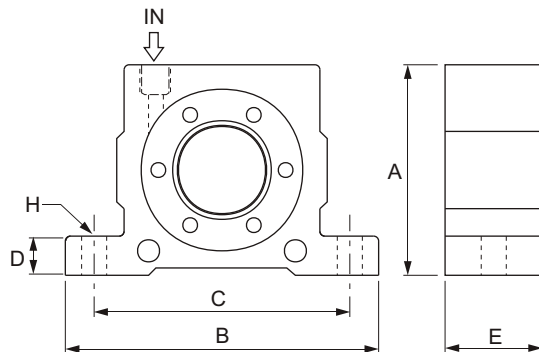
Pneumatic roller vibrator is structured with roller and ring with multi nozzles. It is tightly sealed by plastic side covers. Vibration takes place when roller is pushed by compressed air and centrifugal force is produced by ball rotary motion.



Model No. VR-050 / VR-065 / VR-080 / VR-100

UNIT= mm

(Model No.) Order No.	A	B	C	D	E	H	IN
(VR-050) AB2050	51	86	68	12	29	∅7	1/8"PT
(VR-065) AB2065	67	113	90	16	37	∅9	1/4"PT
(VR-080) AB2080	83	128	104	16	42.5	∅9	1/4"PT
(VR-100) AB2100	103	160	130	20	52	∅11	3/8"PT



(Model No.) Order No.	FREQUENCY (V.P.M.)			FORCE (N)			AIR CONSUMPTION (ℓ / min)			WEIGHT (g)
	2Bar 29PSI	4Bar 58PSI	6Bar 87PSI	2Bar 29PSI	4Bar 58PSI	6Bar 87PSI	2Bar 29PSI	4Bar 58PSI	6Bar 87PSI	
(VR-050) AB2050	25,000	35,000	36,000	1,070	2,920	4,220	100	145	195	240
(VR-065) AB2065	19,000	21,000	26,000	2,730	4,830	6,120	200	300	400	540
(VR-080) AB2080	15,500	18,500	19,000	3,000	6,090	7,450	290	430	570	950
(VR-100) AB2100	11,000	14,000	16,000	3,750	6,750	8,900	370	550	730	1800

AB3 PNEUMATIC TURBINE VIBRATOR

FEATURES

1. Special Aluminum body, low noise, high vibration frequency, small size and light weight.
2. Sudden activation/ deactivation
3. Frequency and amplitude of vibration can be adjusted as required

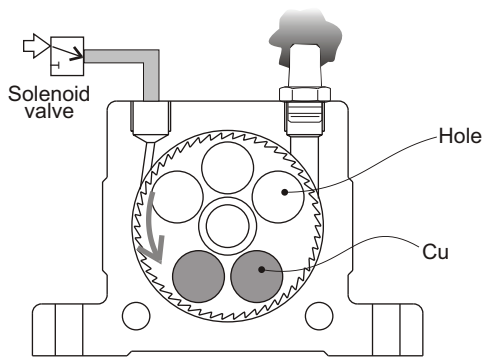
Best choice in low noise environment. It is usually installed on vibrating separator, conveyor, automatic arrangement machine, packing machine, filling machine etc.



Temperature: -40~100°C
Noise level range: 60-75 dBA

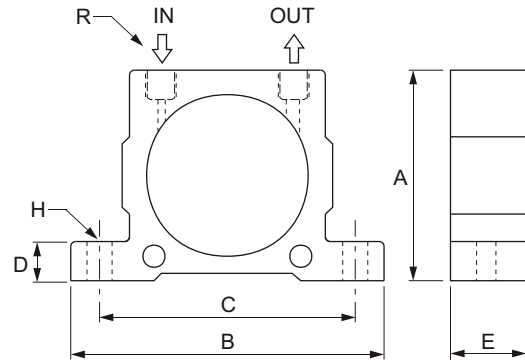
WORKING PRINCIPLE

The vibration is produced by centrifugal force of the unbalance weights from turbine movement. The operation noise is low because the ball bearing supports turbine running.



UNIT= mm

(Model No.) Order No.	A	B	C	D	E	H	R
(VT-10) AB3010	51	86	68	12	33	∅7	1/8"PF
(VT-13) AB3013	67	113	90	16	42	∅9	1/4"PF
(VT-16) AB3016							
(VT-20) AB3020	83	128	104	16	56	∅9	1/4"PF
(VT-25) AB3025							
(VT-36) AB3036	100	160	130	20	73	∅11	3/8"PT



(Model No.) Order No.	FREQUENCY (V.P.M.)			FORCE (N)			AIR CONSUMPTION (ℓ / min)			WEIGHT (g)
	2Bar 29PSI	4Bar 58PSI	6Bar 87PSI	2Bar 29PSI	4Bar 58PSI	6Bar 87PSI	2Bar 29PSI	4Bar 58PSI	6Bar 87PSI	
(VT-10) AB3010	27,500	35,000	37,500	840	1,390	2,400	46	80	112	255
(VT-13) AB3013	26,000	30,000	33,000	1,400	2,440	3,730	120	200	290	565
(VT-16) AB3016	17,000	21,500	24,000	1,220	2,090	3,160	120	200	290	580
(VT-20) AB3020	17,000	20,000	23,000	2,170	4,040	5,520	185	325	455	1090
(VT-25) AB3025	12,000	15,500	17,000	2,120	3,510	5,070	185	325	455	1120
(VT-36) AB3036	8,000	10,000	13,000	3,290	5,360	7,190	740	1206	1618	2300